

D LUM Installation Instruction



Product Description:

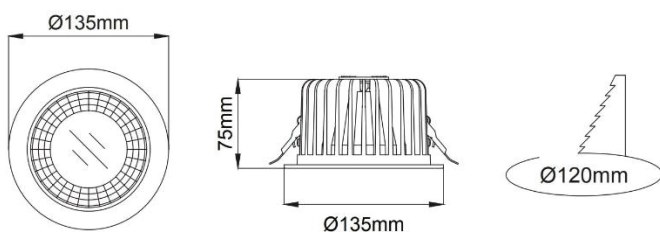
D LUM GEN 3 luminaire is a stylish and powerful downlight, providing comfortable, quality illumination, with low UGR and easy installation. It is designed for public rooms and areas, stairways, corridors, foyers and shops. With 5 years warranty.

Product Image:

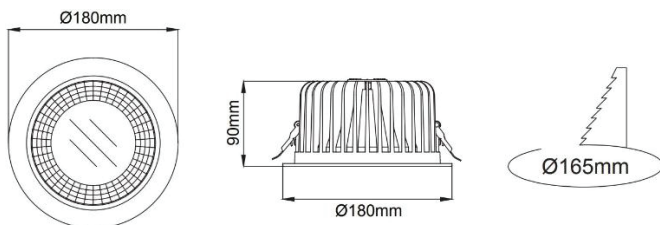


Dimensions:

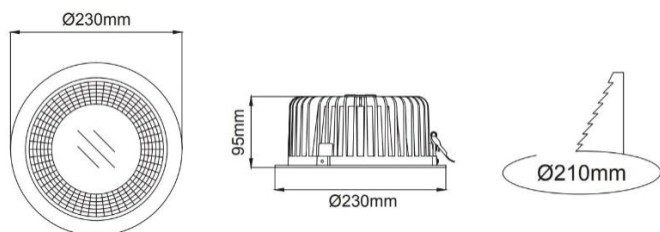
D LUM 015.4000.135



D LUM 020.4000.180



D LUM 035.4000.230



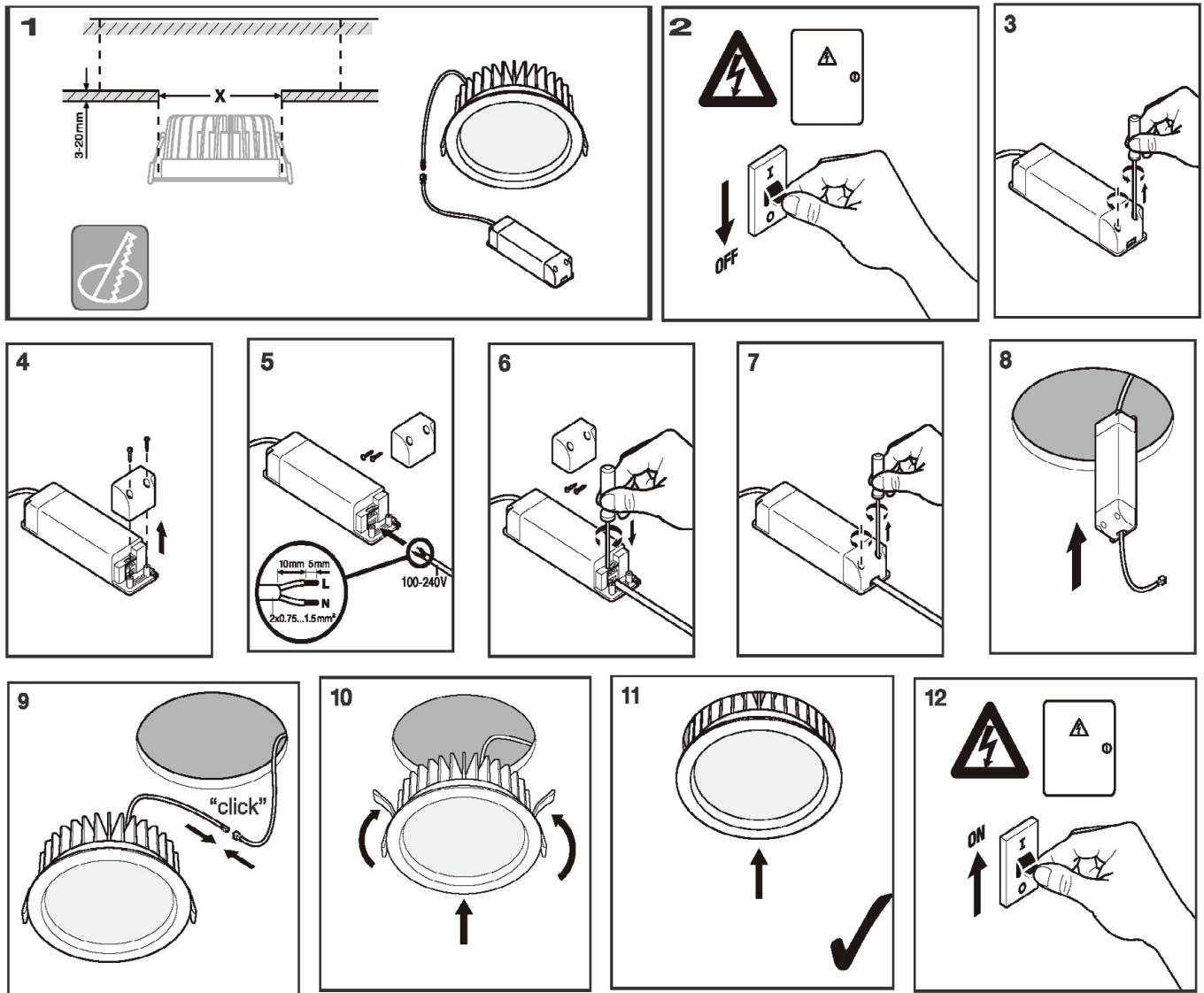
Product Specification:

Supply voltage	220-240 VAC		
System efficacy	100 lm/W	115 lm/W	120 lm/W
Power	12 W	20 W	33 W
Luminous flux	1200 lm	2310 lm	3900 lm
Weight	0.7 kg	1.1 kg	1.5 kg
Power factor	>0.9		
Lifetime L80B10	>50000 h		
CCT	4000K; other upon request		
CRI	80		
Ingress protection	IP 40		
Operating temperature	-20 C° to +35 C°		
Colour (RAL)	RAL 9003		
Housing material	Aluminium		
Warranty	5 years		
Certificates	CE		

Warranty:

This product has a warranty period of 5 Years. Warranties may be available on certain products as indicated in the product description. Warranties are valid from the date of purchase. The warranty is invalid in the case of improper use, installation, tampering, removal of the Q.C. date label or installation in an improper working environment or installation. Should this product fail during the warranty period it will be replaced free of charge, subject to the correct installation of the original product and subsequent return of the faulty unit.

Installation:



Things to know:

- Due to the different Voltage of lighting fixture, please select the appropriate. LED driver based upon the technical specification.
- Installation must be done by professional electrician.
- Please ensure the power has been cut off before installation, in order to prevent the electric shock, make sure the power supply that can't be resumed by anybody before the job done.
- This product should be installed together with fuse..The maintenance should be done by the professional.
- The defective ballast could not be treated as the normal rubbish and should be returned and make use of the normal parts.
- Please consult the authorized department or retailers for returned advice.